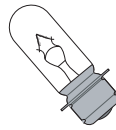


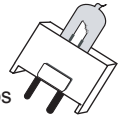


Parts & Electrical Information for Taxiway & Runway Signs



Style 5 lighting systems

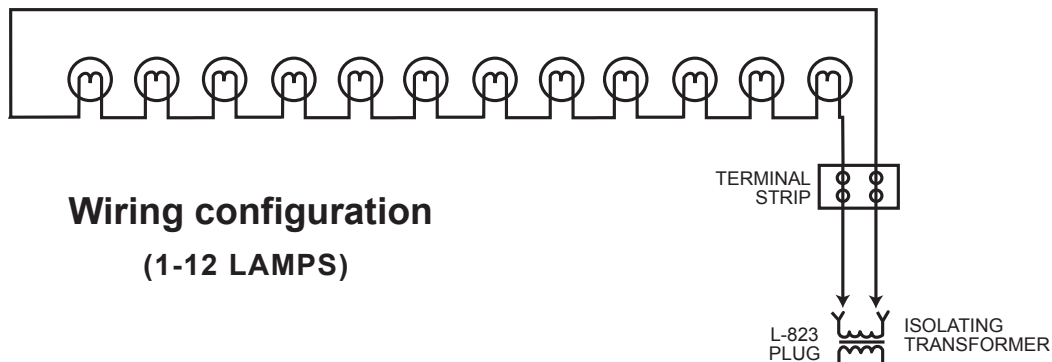
T10P 6.6A/45W incandescent & 45W/EXM quartz lamps



Certified to current FAA Advisory Circular 150/5345-44H
 Specification for Runway and Taxiway Signs
View our Certificate of Conformance dated 12/3/2008

Style 5 signs are for operation on a constant 5.5A circuit and have no brightness control transformer installed.

Traditional Lighting Systems, Style 5										
Sign Size & Module Length	Lamps	FAA Style 5 (Constant 5.5A) 45W/T10P				FAA Style 5 (Constant 5.5A) 45W EXM Qtz				
		Cat #	Isol Xfmr	Max VA	Pwr Factr	Cat #	Isol Xfmr	Max VA	Pwr Factr	
Size 1, 1-mod	1	S1P	45W	39.8	0.99	S1Q	45W	41	0.99	
	2-mod	2	S2P	100W	71	0.98	S2Q	100W	74.8	0.98
	3-mod	3	S3P	100W	97.5	0.98	S3Q	100W	105.9	0.99
	4-mod	4	S4P	200W	138	0.99	S4Q	200W	143.6	0.99
Size 2, 1-mod	2	M1P	100W	71	0.98	M1Q	100W	74.8	0.98	
	2-mod	4	M2P	200W	138	0.99	M2Q	200W	143.6	0.99
	3-mod	6	M3P	200W	191.5	0.97	M3Q	200W	203	0.96
	4-mod	8	M4P	300W	251.2	0.99	M4Q	300W	278.3	0.99
Size 3, 1-mod	2	L1P	100W	71	0.98	L1Q	100W	74.8	0.98	
	2-mod	4	L2P	200W	138	0.99	L2Q	200W	143.6	0.99
	3-mod	6	L3P	200W	191.5	0.97	L3Q	200W	203	0.96
	4-mod	8	L4P	300W	251.2	0.99	L4Q	300W	278.3	0.99
Size 5, 1-mod	2	DL1P	100W	71	0.98	DL1Q	100W	74.8	0.98	
Size 4, 1-mod	4	D1P	200W	138	0.99	D1Q	200W	143.6	0.99	



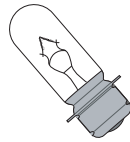
Only Lumacurves are backed by a
3 Year Warranty !
 Contact customer service for details.

Copyright 2010 by STANDARD SIGNS, INC. ALL RIGHT RESERVED.

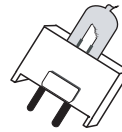
STANDARD SIGNS, INC.
 9115 Freeway Drive, Macedonia, OH 44056
 Phone: 800.258.1997 / 330.467.2030 Fax: 330.467.2076
 www.lumacurve.com

LUMACURVE PARTS LIST

Style 5 Lighting Systems



Incandescent
T10P 6.6A/45W lamps
(Shown below)

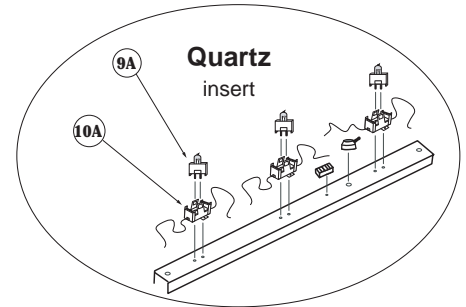


Quartz
45W/EXM lamps
(See Quartz insert)

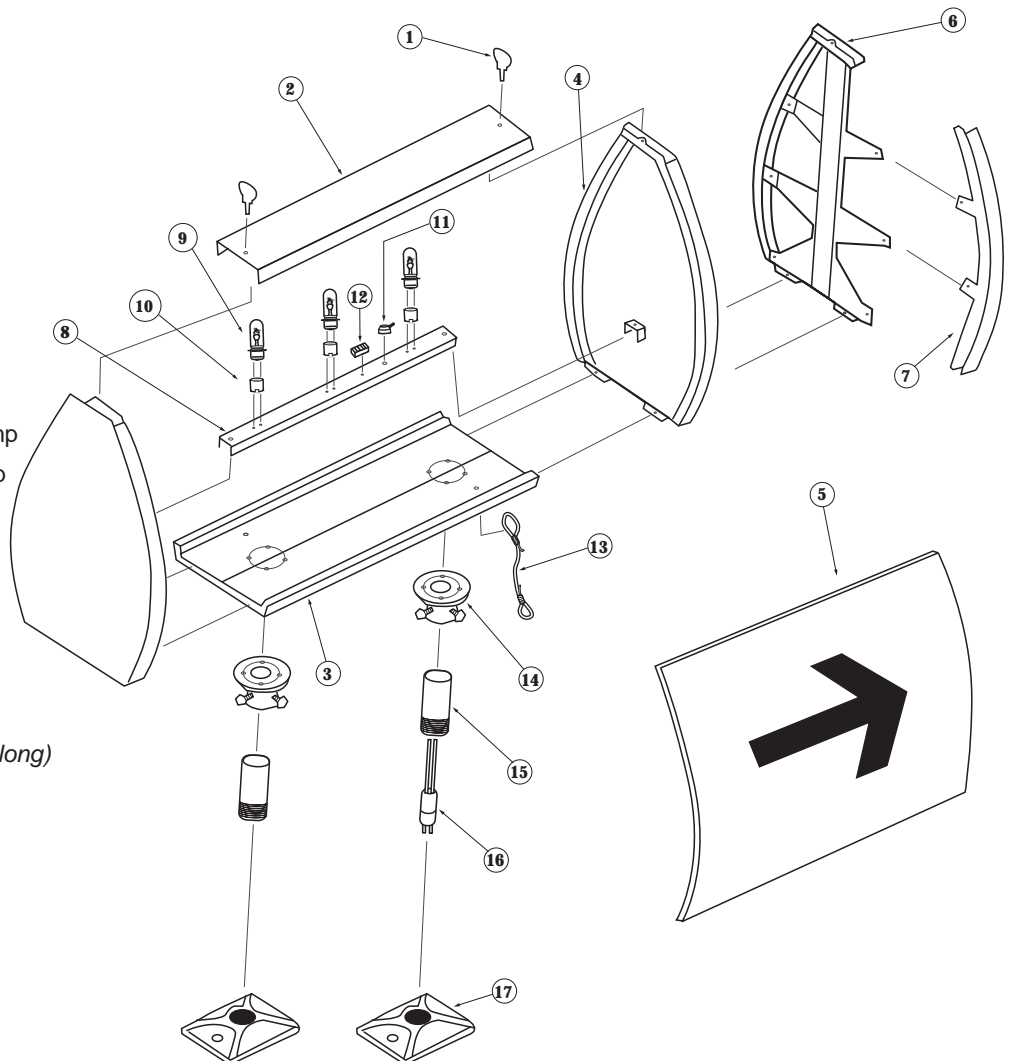


Certified to current FAA Advisory Circular 150/5345-44H
Specification for Runway and Taxiway Signs
View our Certificate of Conformance dated 12/3/2008

Experience our exclusive "Wait-Less" service!
Call by 10AM, complete signs & parts ship same day!
No extra charge! Call 800.258.1997



Item	Description
1.	340/345 Turn Fasteners
2.	*CLT-2 Cover
3.	*CLT-3 Base
4.	*CLT-4 End Panel
5.	*CLT-5 Legend Panel ¹
6.	*CLT-6 Multi-Mode Insert
6A.	*CLT-6A Panel Spacer ²
7.	*7-A Face Insert Channel ¹
8.	*8-A Lamp Socket Channel
9.	6.6/T10P 45W Incandescent Lamp
9A.	45W EXM 45W EXM Quartz Lamp
10.	400 Prefocus socket
10A.	501 Quartz socket
11.	480 Cable Clamp
12.	420 Terminal Strip
13.	CLT-19 Tether
14.	130 Slipfitter
15.	*140 Frangible Coupling (6" long)



To help in placing your order:

*Prefix part number with one of the following sign sizes: "S" (small/ size 1), "M" (medium/ size 2), "L" (large/ size 3 & 5)

¹ Specify one of the following sign types: L-858Y ("Y"ellow), L-858R ("R"ed), L-858L ("L"ocation), or Blank/ Black

² Size 3 only, 2 per module-not pictured



Manufacturer of the First FAA Sign in 1955

VA Loading & Power Factors

Section C: "Electrical Systems"

Certified to current FAA Advisory Circular 150/5345-44H

Specification for Runway and Taxiway Signs

View our Certificate of Conformance

Sign Size & Module Length Lamps		Green Lighting Systems						
		FAA Style 2 (4.8A-6.6A) Green 5W Adv Fluorescent Isol			FAA Style 3 (2.8A-6.6A) Green 5W Adv Fluorescent Isol			
		Xfmr	Max VA	Pwr Factr	Xfmr	Max VA	Pwr Factr	
Size 1, 1-mod	1	45W	58	0.92	100W	63	0.91	
	2-mod	2	100W	68	0.92	100W	69	0.92
	3-mod	3	100W	74	0.94	100W	74	0.94
	4-mod	4	100W	80	0.94	100W	79	0.94
Size 2, 1-mod	2	100W	68	0.92	100W	69	0.92	
	2-mod	4	100W	80	0.94	100W	79	0.94
	3-mod	6	100W	94	0.96	100W	94	0.96
	4-mod	8	100W	108	0.97	200W	114	0.93
Size 3, 1-mod	2	100W	68	0.92	100W	69	0.92	
	2-mod	4	100W	80	0.94	100W	79	0.94
	3-mod	6	100W	94	0.96	100W	94	0.96
	4-mod	8	100W	108	0.97	200W	114	0.93
Size 5, 1-mod	2	100W	68	0.92	100W	69	0.92	
Size 4, 1-mod	4	100W	80	0.94	100W	79	0.94	

Sign Size & Module Length Lamps		XTL Lighting Systems						
		FAA Style 2 (4.8A-6.6A) XTL 20W Quartz Isol			FAA Style 3 (2.8A-6.6A) XTL 20W Quartz Isol			
		Xfmr	Max VA	Pwr Factr	Xfmr	Max VA	Pwr Factr	
Size 1, 1-mod	1	100W	77	0.92	100W	78	0.92	
	2-mod	2	100W	85	0.93	200W	86	0.92
	3-mod	3	200W	108	0.93	300W	116	0.9
	4-mod	4	200W	133	0.93	300W	140	0.91
Size 2, 1-mod	2	100W	85	0.93	200W	86	0.92	
	2-mod	4	200W	133	0.93	300W	140	0.91
	3-mod	6	300W	185	0.92	500W	195	0.92
	4-mod	8	300W	236	0.93	600W*	256	0.92
Size 3, 1-mod	2	100W	85	0.93	200W	86	0.92	
	2-mod	4	200W	133	0.93	300W	140	0.91
	3-mod	6	300W	185	0.92	500W	195	0.92
	4-mod	8	300W	236	0.93	600W*	256	0.92
Size 5, 1-mod	2	100W	85	0.93	100W	86	0.92	
Size 4, 1-mod	4	200W	133	0.93	300W	140	0.91	

*A Siamese pigtail with two male L-823 plugs and one tennis ball female receptacle is supplied with these signs for connection to two isolation transformers making the required wattage sum.

Standard Signs, Inc.

9115 Freeway Drive, Macedonia, OH 44056
 P: 800.258.1997 / 330.467.2030 F: 330.467.2076
www.lumacurve.com



Manufacturer of the First FAA Sign in 1955

VA Loading & Power Factors

Section C: "Electrical Systems"

Certified to current FAA Advisory Circular 150/5345-44H

Specification for Runway and Taxiway Signs

View our Certificate of Conformance

Sign Size & Module Length Lamps		Traditional Lighting Systems, Style 5						
		FAA Style 5 (Constant 5.5A) 45W/T10P			FAA Style 5 (Constant 5.5A) 45W EXM Qtz			
		Isol Xfmr	Max VA	Pwr Factr	Isol Xfmr	Max VA	Pwr Factr	
Size 1, 1-mod	1	45W	39.8	0.99	45W	41	0.99	
	2-mod	2	100W	71	0.98	100W	74.8	0.98
	3-mod	3	100W	97.5	0.98	100W	105.9	0.99
	4-mod	4	200W	138	0.99	200W	143.6	0.99
Size 2, 1-mod	2	100W	71	0.98	100W	74.8	0.98	
	2-mod	4	200W	138	0.99	200W	143.6	0.99
	3-mod	6	200W	191.5	0.97	200W	203	0.96
	4-mod	8	300W	251.2	0.99	300W	278.3	0.99
Size 3, 1-mod	2	100W	71	0.98	100W	74.8	0.98	
	2-mod	4	200W	138	0.99	200W	143.6	0.99
	3-mod	6	200W	191.5	0.97	200W	203	0.96
	4-mod	8	300W	251.2	0.99	300W	278.3	0.99
Size 5, 1-mod	2	100W	71	0.98	100W	74.8	0.98	
Size 4, 1-mod	4	200W	138	0.99	200W	143.6	0.99	

Standard Signs, Inc.

9115 Freeway Drive, Macedonia, OH 44056
 P: 800.258.1997 / 330.467.2030 F: 330.467.2076
www.lumacurve.com